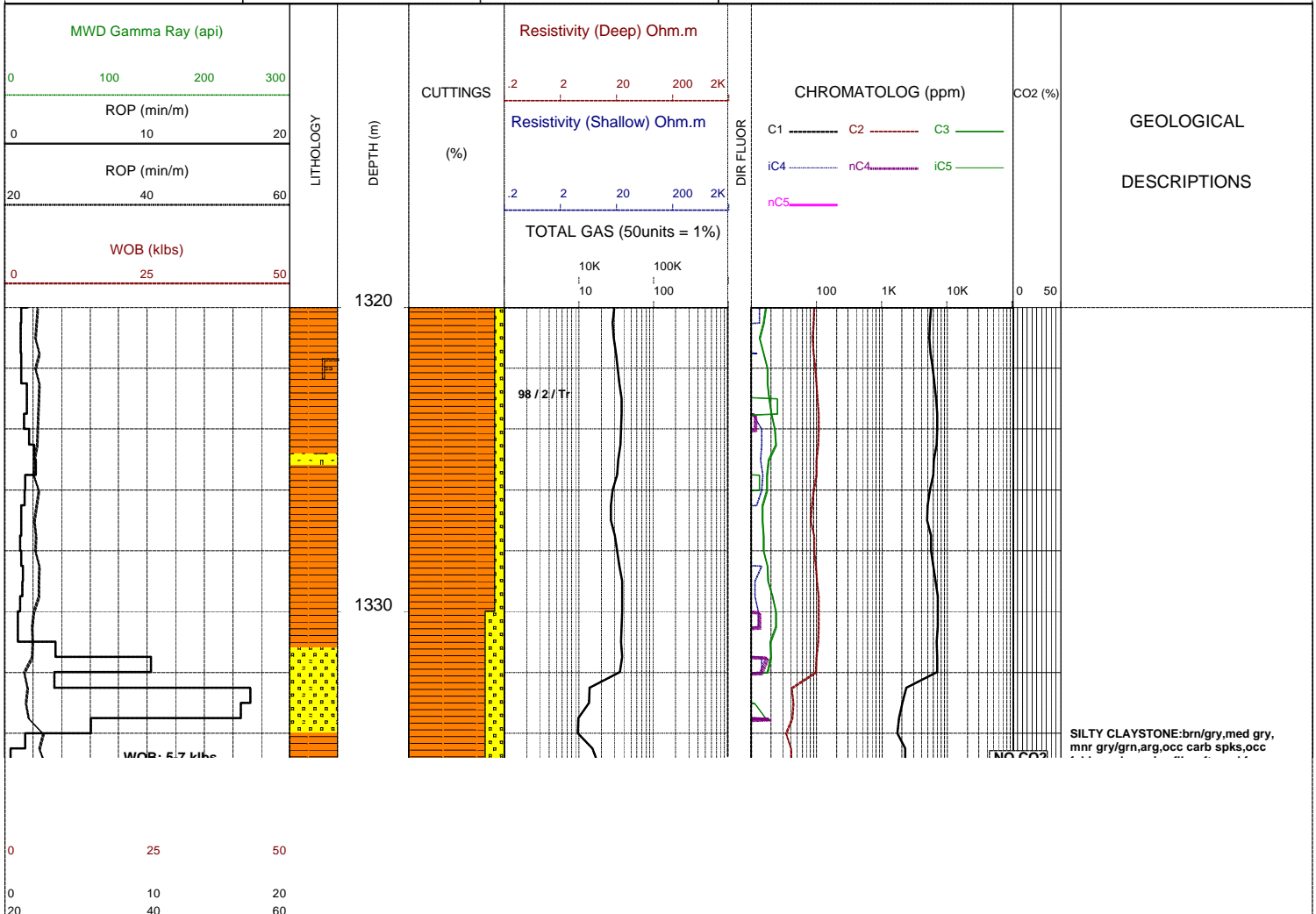


GLENAIRE 1

Field :	Kelly Bushing : PEP 160	Rig : ENSIGN 32	Open Hole:	Cased Hole:	Loggers : J.SUTTON
Block:	Ground Level : STATUS	Spud Date : 08/09/2006	17.5" (12.25') 307m	13.375" (9.625') 303.5m	N.LUIS
State : VICTORIA	GRS80 Ellipsoid MGA94 Zone54 :	TD Date : XX/XX/2006	12.25" (8.5') 1255m	9.625" (7.0') 1252m	J.TRETHEWEY
Country : AUSTRALIA	Lat. : 37°34'47.03S	Total Depth : VVV	8.5" XXXXm		
Scale : 1/ 200	Long. : 140°59'52.25E	Final Status : WWW		RRRR SSSS AAA	

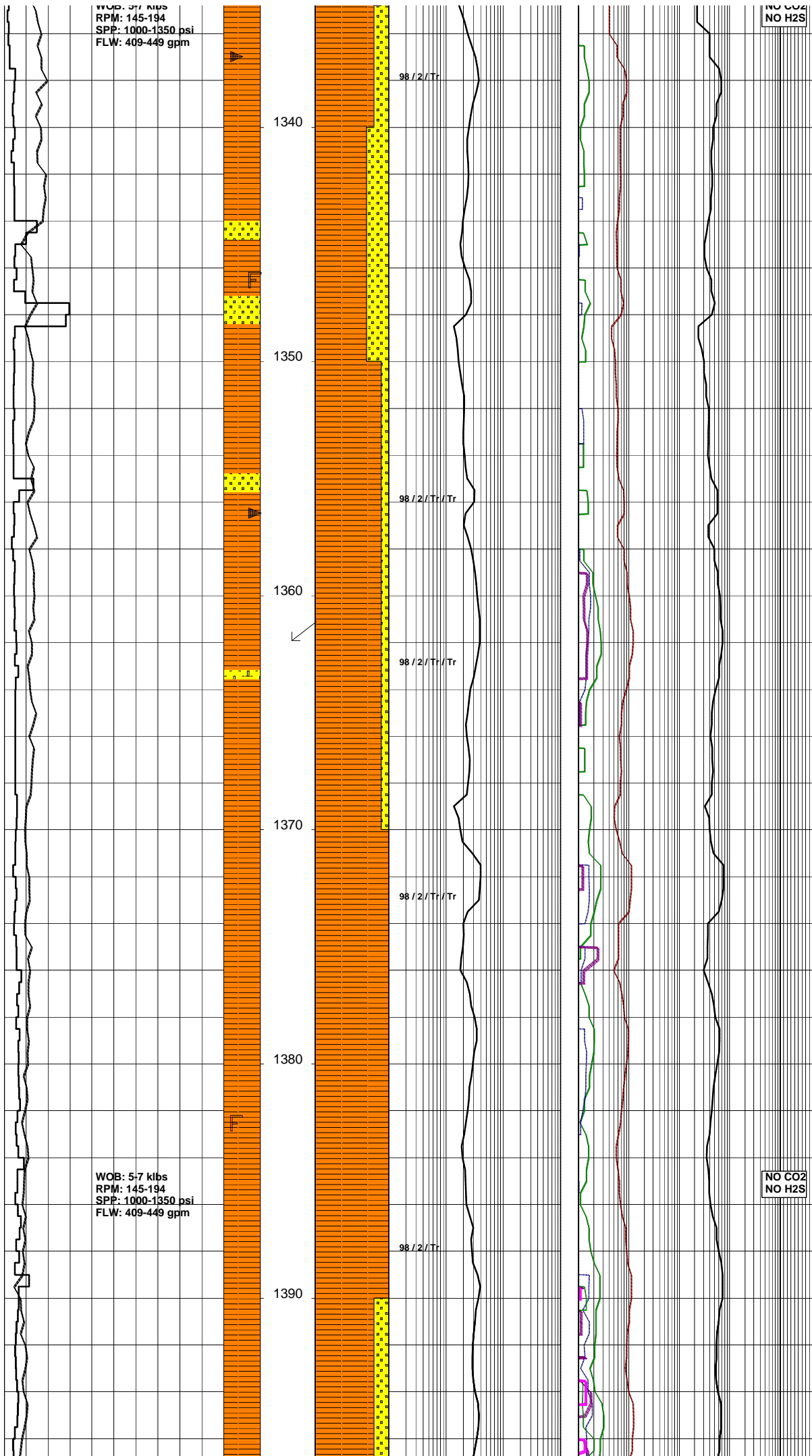
LITHOLOGY	ACCESSORIES	DRILLING DATA	ABBREVIATIONS
Conglomerate Coarse Sandstone Med Sandstone Calcareous Sst Silty Sandstone Siltstone Carb. Siltstone Calc. Siltstone Clay Limestone Dolomite Coal Anhydrite Gypsum Igneous Volcanic Metamorphic Cement	Pyrite Siderite Glauconite Feldspar Mica Ferrous Chert Calcareous Dolomitic Carbonaceous Lithoclast Breccia Foraminifera Corals Inoceramus Bryozoa Plant remains Fossils	Casing Shoe Bit Trip Wiper Trip Core DST Deviation Survey MUD DATA MW - Mud Weight (lb/gal) FV - Funnel Viscosity (s/qt) PV - Plastic Viscosity (cps) YP - Yield Point (lb/100ftsq) Gel - Gel Strength (10sec) WL - Water Loss (cc/30min) pH - Acidity / Alkalinity Ck - Cake (32nd/inch) O/W/S - Oil / Water / Solids Cl - Chlorides (mg/L) K+ - Potassium (mg/L) Rmf - Res. Mud Filtrate (ohmm)	BOPD - Barrels of Oil Per Day BWPD - Barrels of Water Per Day CG - Connection Gas CO - Circulate Out COND - Condensate c/c - Crush Cut DST - Drill Stem Test FLOW - Flow Rate (gal/min) GCM - Gas Cut Mud GCW - Gas Cut Water GTS - Gas To Surface INJ - Injection of Mist (bbls/hr) LCM - Lost Circulation Material MMCFD - Million Cubic Feet / Day NGTS - No Gas To Surface NOTS - No Oil To Surface NFTS - No Flow To Surface OCM - Oil Cut Mud OG - Over Gauge OH - Open Hole OTS - Oil To Surface Q - Flow Rate REC - Recovery FLUOR - Fluorescence ROP - Rate Of Penetration RPM - Revolutions Per Minute RTSTM - Rate Too Small To Measure Rw - Resistivity water r/r - Ring Residue SCFM - Standard Cubic Ft/Min (air) SGCM - Slightly Gas Cut Mud SPM - Strokes Per Minute SPP - Stand Pipe Pressure SWC - Side-Wall Core TG - Trip Gas WOB - Weight On Bit



WOB: 57 klbs
RPM: 145-194
SPP: 1000-1350 psi
FLW: 409-449 gpm

NO CO2
NO H2S

feld,mnr brn mica flks,sft-mod frm,
sbbkly.



COAL:(Tr)v dk brn-blk,dll-ea,slty,
grd to carb SLTST,sft,sbfiss-sbbkly,
hckly.

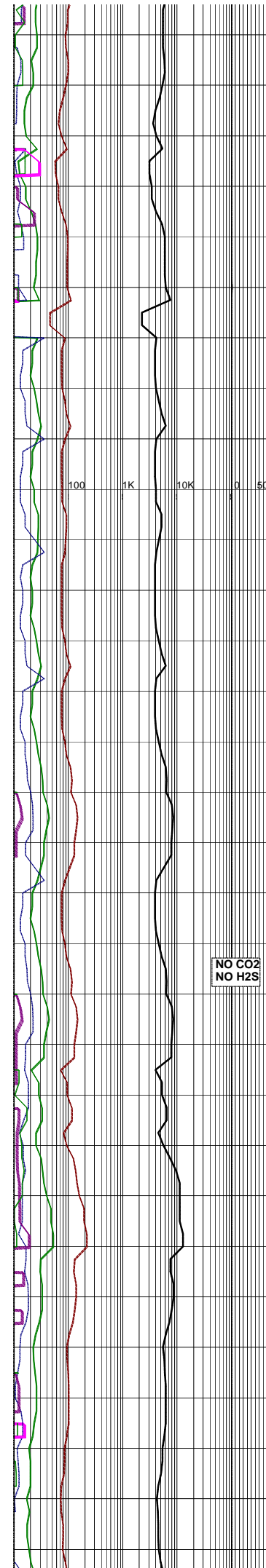
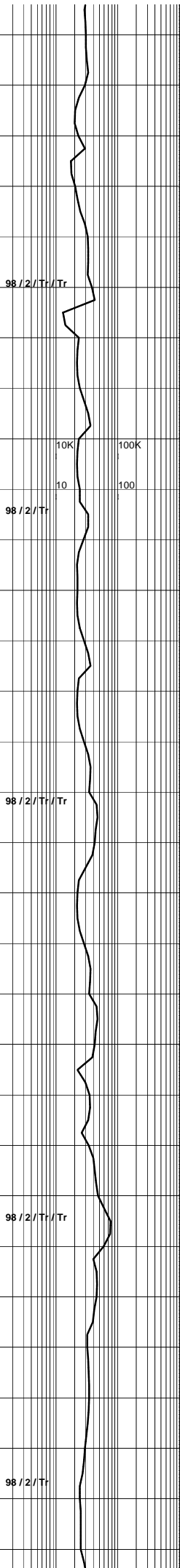
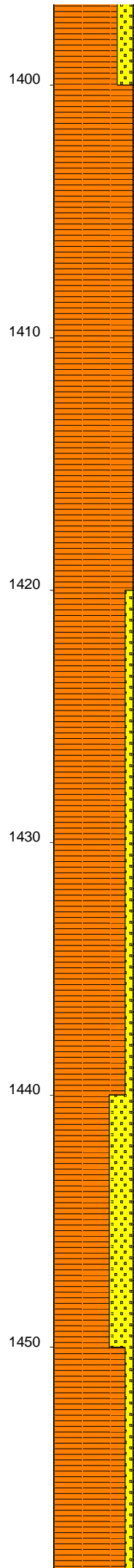
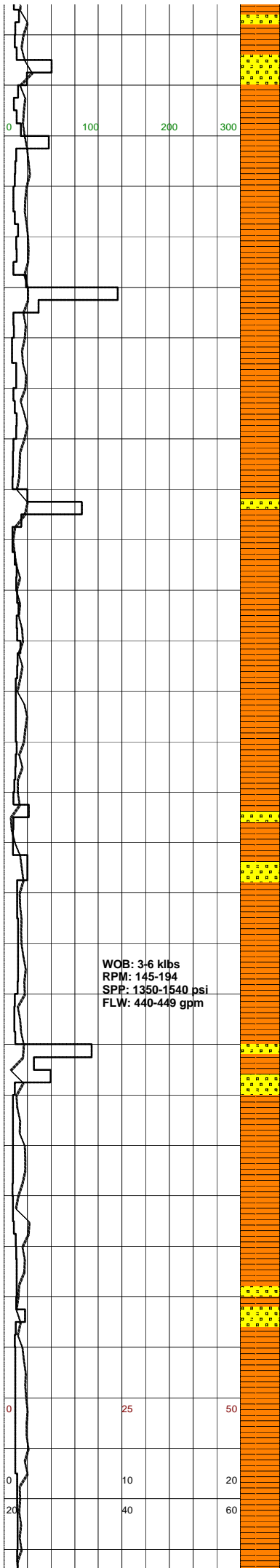
SURVEY @ 1362m: 1.0° 77°T

SANDSTONE:lt-med gry,vf-f,mod wl
srt,sbrnd,com mod strg calc cmt,
occ-com off wh arg mtx,com feld,
occ carb spks,rr grn liths,fr-v
hd,nil-ti vis & inf por,no fluor.

SILTY CLAYSTONE:brn/gry,med gry,
mnr med brn,tr gry/grn,arg,occ carb
spks,occ feld,sft-mod frm,sbbkly.

WOB: 5-7 klbs
RPM: 145-194
SPP: 1000-1350 psi
FLW: 409-449 gpm

NO CO2
NO H2S



SANDSTONE:lt-med gry,vf-f,mod w/ srt,sbrnd,com mod strg calc cmt, occ-abdt off wh arg mix,grd to aren SLTST i/p,com feld,occ carb spks,fr-i-v hd,ni-ti vis & inf por, no fluor.

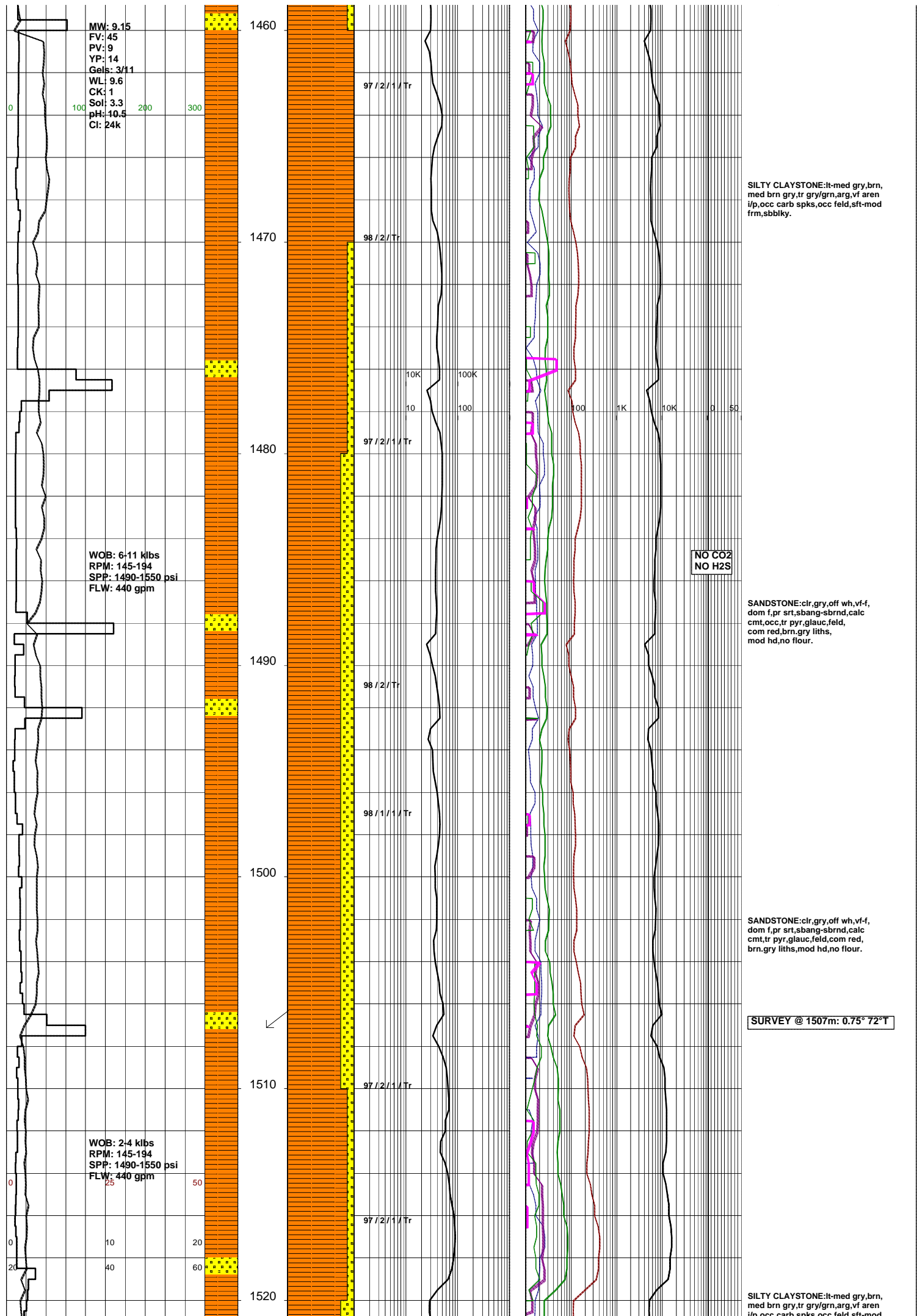
SILTY CLAYSTONE:brn/gry,med gry, mnr med brn,tr gry/grn,arg,vf aren i/p,occ carb spks,occ feld,sft-mod frm,sbbiky.

SANDSTONE:clr,gry,off wh,vf-f, dom f,pr srt,sbang-sbrnd,calc cmt,occ,tr pyr,glauc,feld, com red,brn.gry liths, mod hd,no flour.

NO CO2
 NO H2S

SILTY CLAYSTONE:brn/gry,med gry, mnr med brn,tr gry/grn,arg,vf aren i/p,occ carb spks,occ feld,sft-mod frm,sbbiky.

SANDSTONE:clr,gry,off wh,vf-f, dom f,pr srt,sbang-sbrnd,calc cmt,occ,tr pyr,glauc,feld, com red,brn.gry liths, mod hd,no flour.



MW: 9.15
 FV: 45
 PV: 9
 YP: 14
 Gels: 3/11
 WL: 9.6
 CK: 1
 Sol: 3.3
 pH: 10.5
 Cl: 24k

WOB: 6-11 klbs
 RPM: 145-194
 SPP: 1490-1550 psi
 FLW: 440 gpm

WOB: 2-4 klbs
 RPM: 145-194
 SPP: 1490-1550 psi
 FLW: 440 gpm

NO CO2
 NO H2S

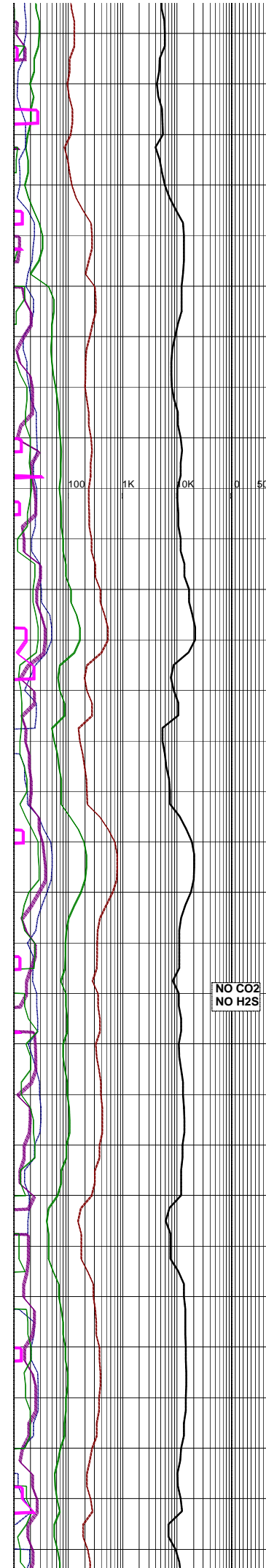
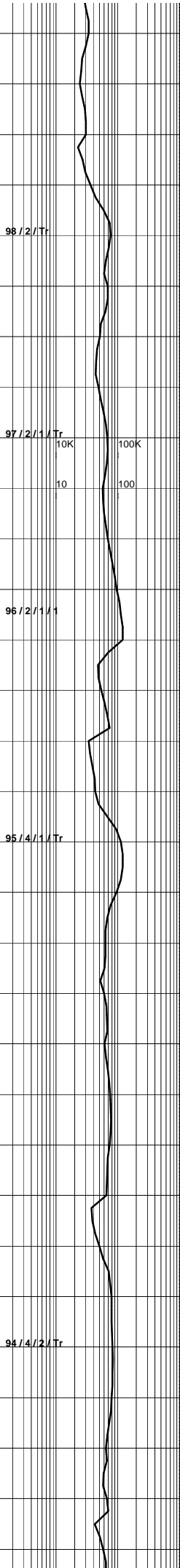
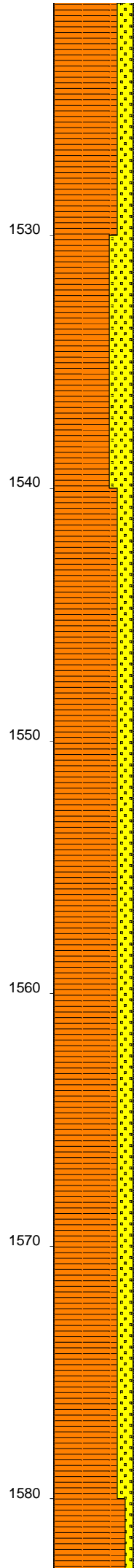
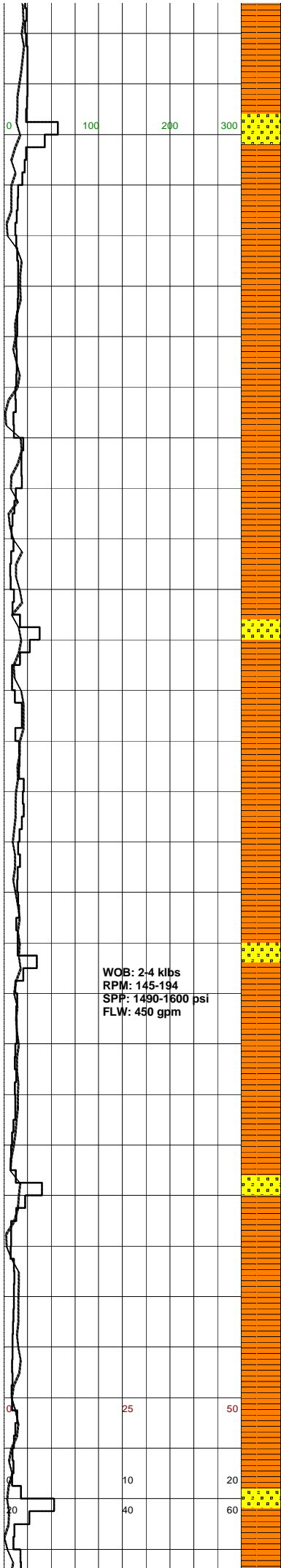
SILTY CLAYSTONE:lt-med gry,brn, med brn gry,tr gry/grn,arg,vf aren i/p,occ carb spks,occ feld,sft-mod frm,sbbiky.

SANDSTONE:clr,gry,off wh,vf-f, dom f,pr srt,sbang-sbrnd,calc cmt,occ,tr pyr,glauc,feld, com red,brn,gry liths, mod hd,no flour.

SANDSTONE:clr,gry,off wh,vf-f, dom f,pr srt,sbang-sbrnd,calc cmt,tr pyr,glauc,feld,com red, brn,gry liths,mod hd,no flour.

SURVEY @ 1507m: 0.75° 72°T

SILTY CLAYSTONE:lt-med gry,brn, med brn gry,tr gry/grn,arg,vf aren i/o,occ carb spks,occ feld,sft-mod

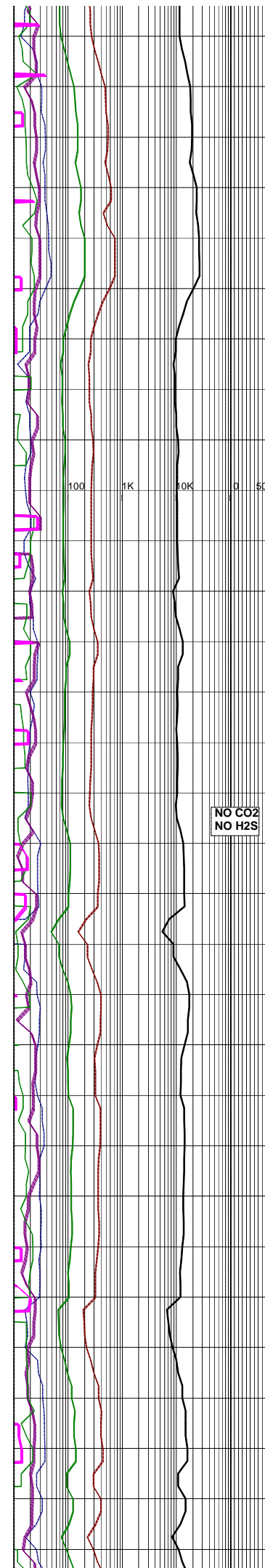
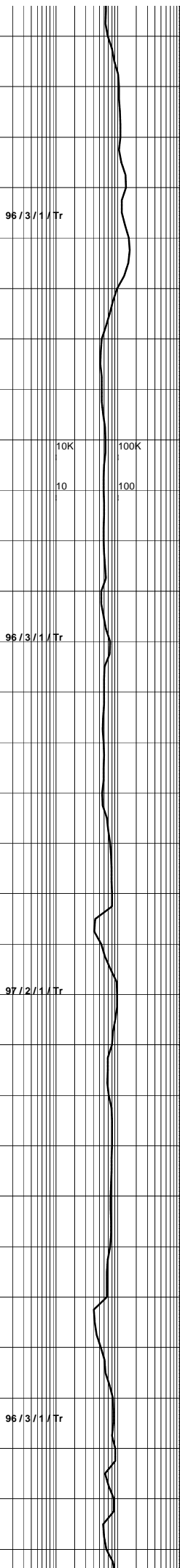
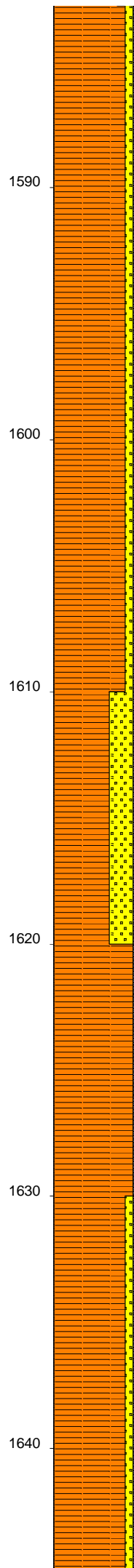
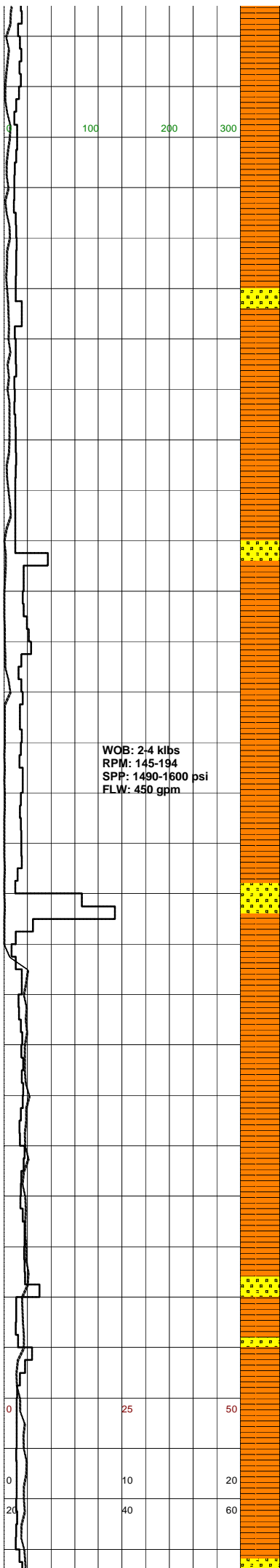


frm,sbbiky.

SILTY CLAYSTONE:lt-med gry,brn, med brn gry,tr gry/grn,arg,vf aren i/p,occ carb spks,occ feld,sft-mod frm,sbbiky.

SILTY CLAYSTONE:lt-med gry,brn, med brn gry,tr gry/grn,arg,vf aren i/p,occ carb spks,occ feld,sft-mod frm,sbbiky.

SANDSTONE:clr,gry,off wh,vf-f, dom f,pr srt,sbang-sbrnd,calc cmt,com qtz grns,tr pyr,glauc, feld,com red,brn,gry liths, mod hd,no flour.



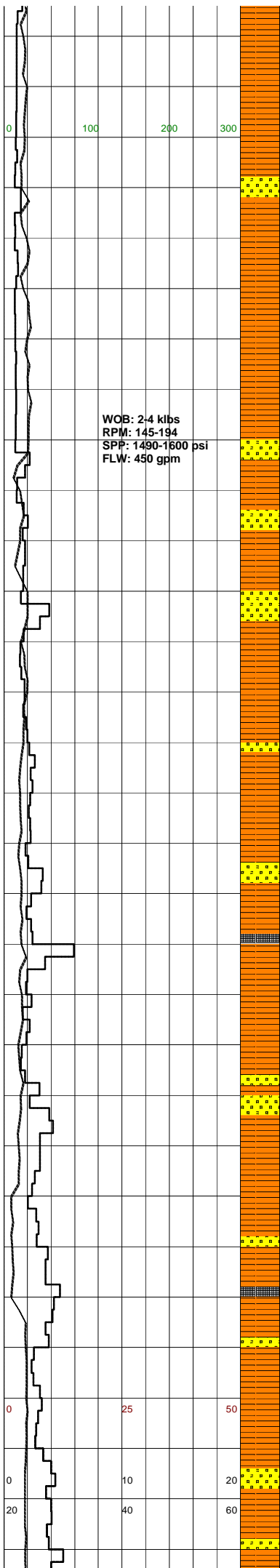
SILTY CLAYSTONE:lt-med gry,brn,
 med brn gry,tr gry/grn,arg,vf aren
 i/p,occ carb spks,occ feld,sft-mod
 frm,sbbiky.

SANDSTONE:wh,off wh,vf-f,dom f,
 mod srt,sbang-sbrnd,wk calc cmt,
 tr feld,brn,blk liths,carb spks,
 mod hd,ti por,no flour.

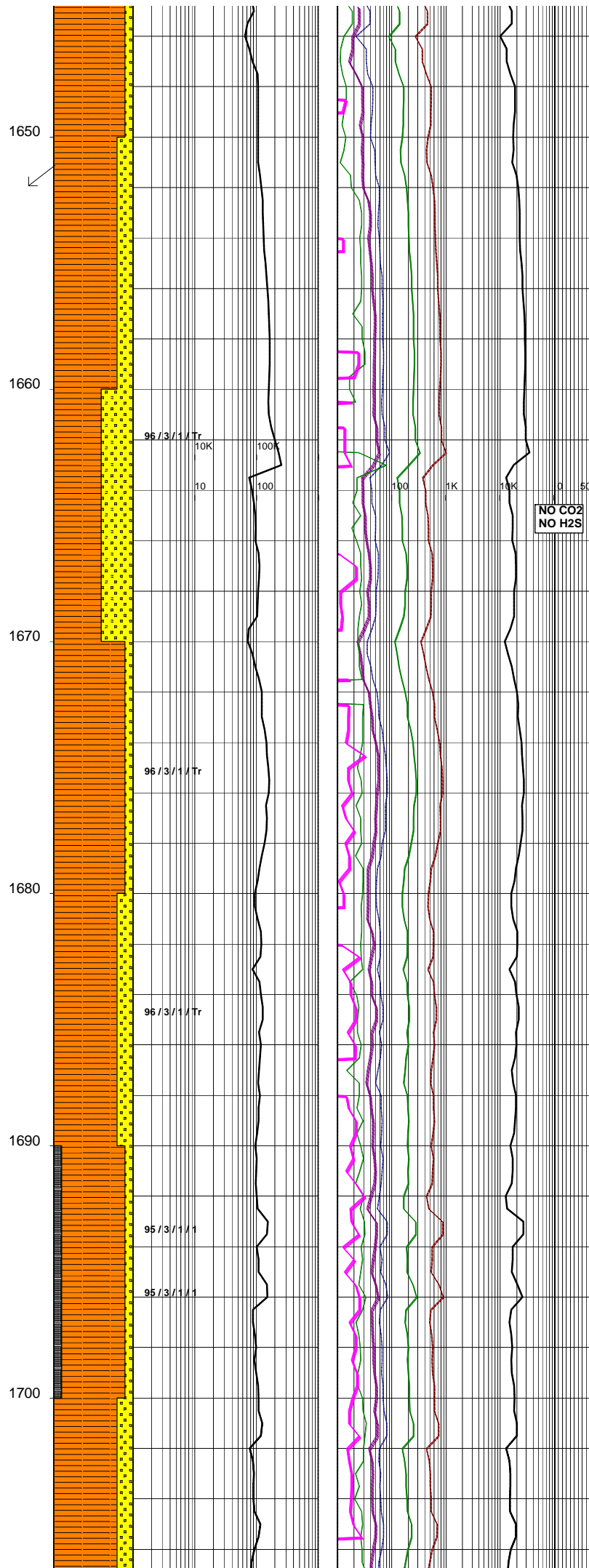
NO CO2
 NO H2S

SILTY CLAYSTONE:lt-med gry,dk
 gry,brn,arg,aren i/p grd to
 SLTST,tr liths,carb spks,sft-
 mod hd,sbbiky.

SANDSTONE:wh,off wh,vf-f,dom
 f,mod srt,sbang-sbrnd,wk calc
 cmt,tr feld,brn,blk,liths,carb
 spks,mod hd,ti por,no flour.



WOB: 2.4 klbs
 RPM: 145-194
 SPP: 1490-1600 psi
 FLW: 450 gpm



NO CO2
 NO H2S

SURVEY @ 1652m: 2.25° 32°T

SANDSTONE:wh,off wh,vf-f,dom
 f,mod srt,sbang-sbrnd,wk calc
 cmt,tr feld,brn,blk,liths,carb
 spks,mod hd,ti por,no flour.

SILTY CLAYSTONE:lt-med gry,dk
 gry,brn,arg,aren i/p grd to
 SLTST,tr liths,carb spks,sft-
 mod hd,sbblky.

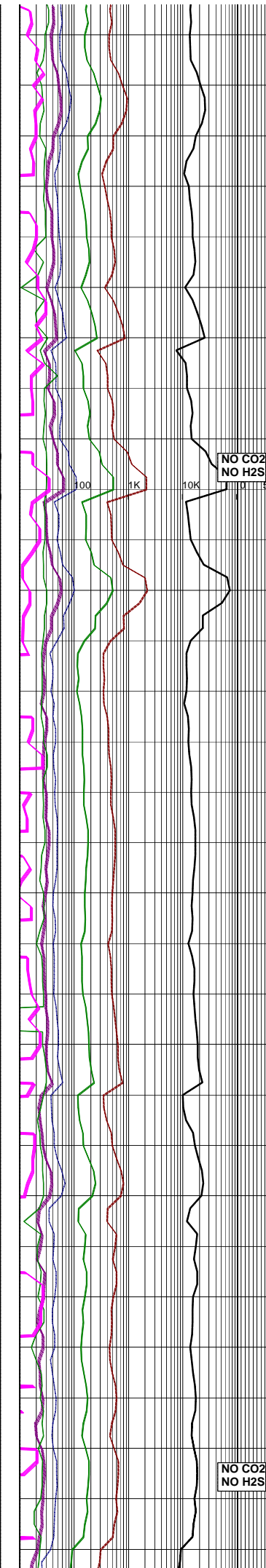
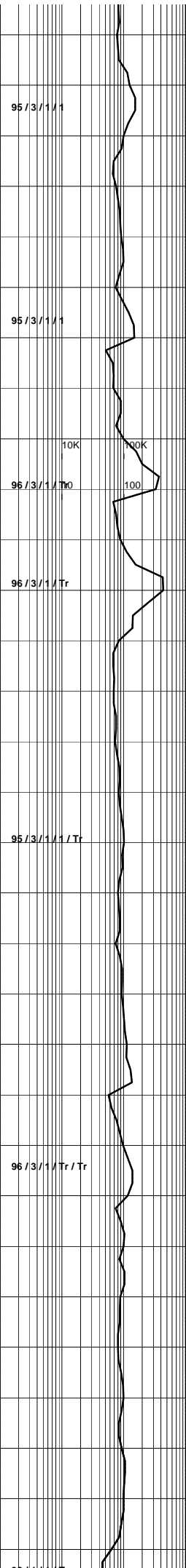
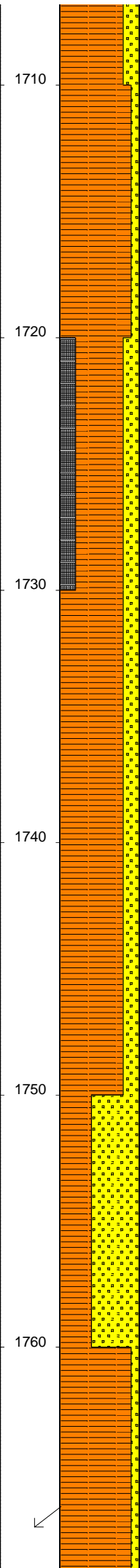
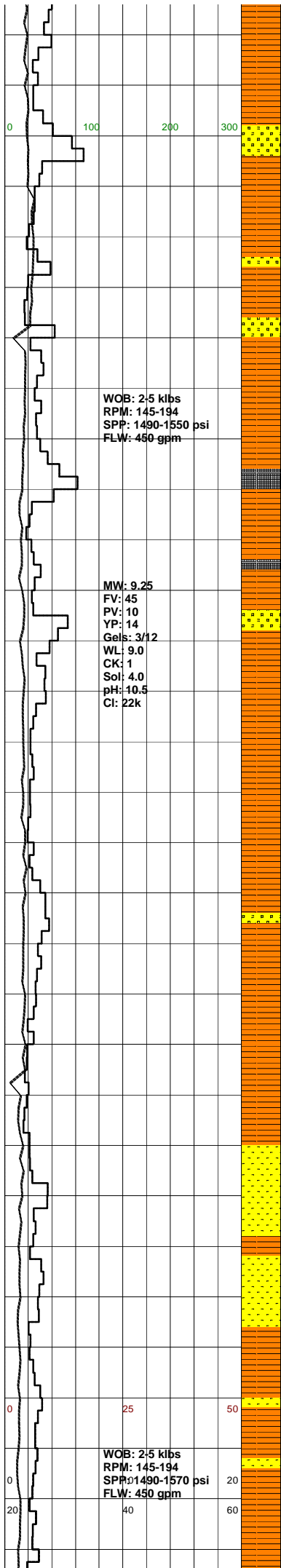
COAL:(detrital)blk,ea-sbvit,arg
 i/p,mod hd-brit,platy.

The Coal has no fluorescence but
 gives a very dull yellow crush
 cut.

SANDSTONE:wh,off wh,vf-f,dom
 f,mod srt,sbang-sbrnd,wk calc
 cmt,tr feld,brn,blk,liths,carb
 spks,mod hd,ti por,no flour.

COAL:(detrital)blk,ea-sbvit,arg
 i/p,mod hd-brit,platy.

SILTY CLAYSTONE:lt-med grn gry,
 lt-med brn,tr feld grns,com blk
 carb spks,tr micmic,rr pyr,sft-
 frm,sbblky.



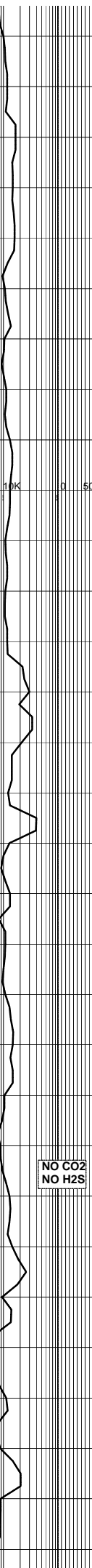
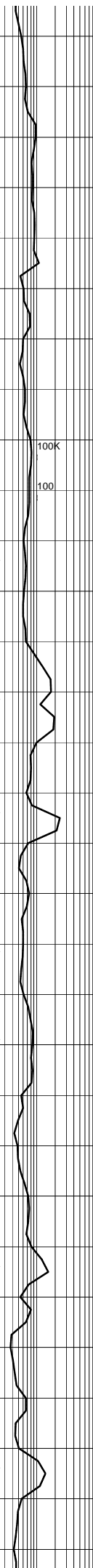
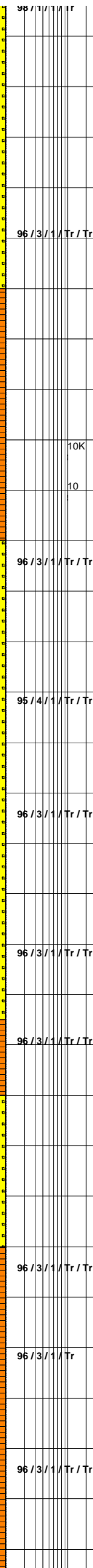
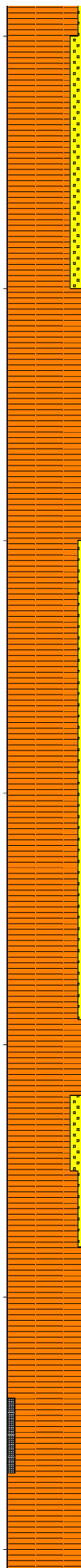
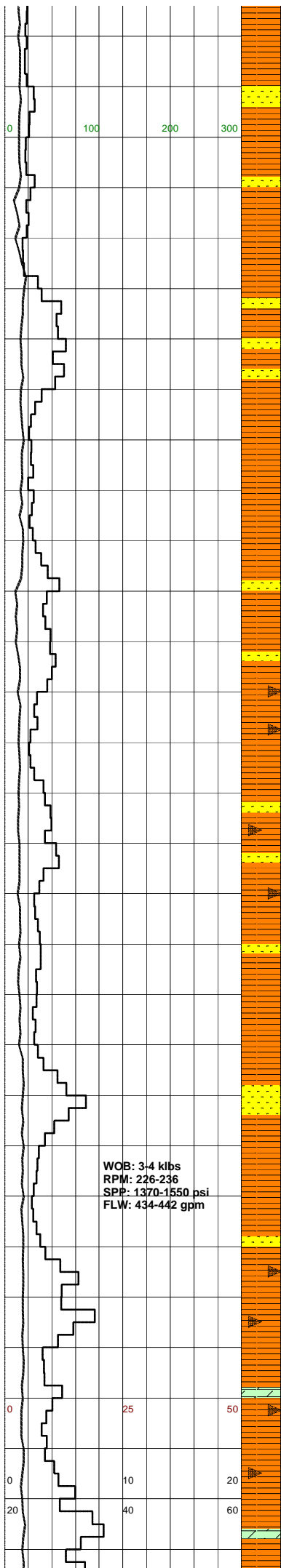
SANDSTONE:off wh-lt grn gry,vf-f,dom f,sbang-sbrnd,mod srt,mod sil cmt-wk calc cmt,abdt off wh arg mtx,abdt feld grns,abdt grn, gry nd com brn,red nd blk liths, tr qtz grns,com colay detritus, mod hd,no vis por,no fluor.

COAL:blk,dk brn,dll-vit,arg i/p, stly i/p,sft-brit,unevn.

SILTY CLAYSTONE:lt-med grn gry, lt-med brn,tr feld grns,com blk carb spks,tr micmic,rr pyr,sft-frn,sbbiky.

SANDSTONE:lt-med gry,f-vf,dom f, wl srt,sbang-sbrnd,occ wk calc cmt, occ mod wk sil cmt,occ off wh arg mtx,com feld,brn,blk,grn liths,occ carb spks,mod hd,nil-ti vis por,no fluor.

SURVEY @ 1767m: 3.0° 22°T



SILTY CLAYSTONE:brn/gry,med gry, med brn,aren,arg i/p,com carb spks, com feld,micmic i/p,frm-mod sft, sbfiss-sbbkly.

SANDSTONE:lt-med gry,f,occ vf,wl srt,sbrnd,occ wk calc cmt,com off wh arg mtx,grd to aren SLTST i/p, com feld,tr brn,blk,grn liths,occ carb spks,frm-mod hd,ti vis por,no fluor.

COAL:v dk brn-blk,dll,ea i/p,slty,grd to carb SLTST i/p,frm-brit,sbbkly, hckly-unevn.

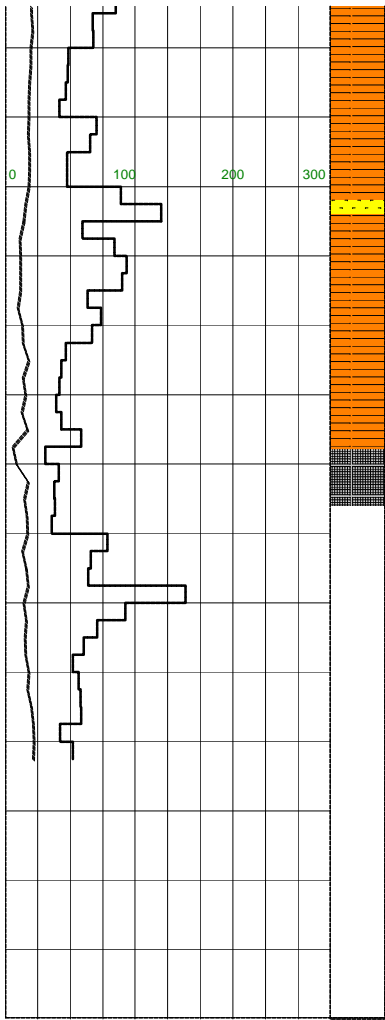
SILTY CLAYSTONE:brn/gry,med gry, med brn,aren,grd to vf SST i/p,arg, com carb spks,com feld,micmic i/p, frm-mod sft,sbfiss-sbbkly.

SANDSTONE:lt-med gry,vf-f,wl srt, sbrnd,mnr wk calc cmt,mnr wk sil cmt,com-abdt off wh arg mtx,grd to aren SLTST i/p,com feld,occ carb spks,mnr brn,blk,grn liths,frm, mnr mod hd,ti vis por,no fluor.

NO CO2
NO H2S

COAL:v dk brn-blk,dll-sbvit i/p,slty, grd to carb SLTST i/p,brit-frm,sbbkly, evn-conch.

DOLOMITE:tn,lt brn,mnr med brn,lut, arg,xln,hd-mod hd.



1840

1850

1860

96 / 3 / 1 / Tr / Tr

96 / 3 / 1 / Tr / Tr

97 / 3 / Tr / Tr

10K

100K

10

100

100

1K

10K

0

50

SILTY CLAYSTONE:brn/gry,med gry, med brn,aren,arg,sil i/p,com feld,occ carb spks,micmic i/p,frm-mod hd, sbfiss-sbbiky.

SANDSTONE:lt-med gry,vf-f,wl srt, mnr wk calc cmt,mnr wk sil cmt,com-abdt off wh-lt gry slty mtx,grd to aren SLTST i/p,com feld,occ carb spks,tr grn liths,fri-mod hd i/p,v pr-ti vis por,no fluor.

COAL:blk,tr v dk brn,svvit-vit,arg i/p,brit-mod hd,sbbiky,unevnr.

